

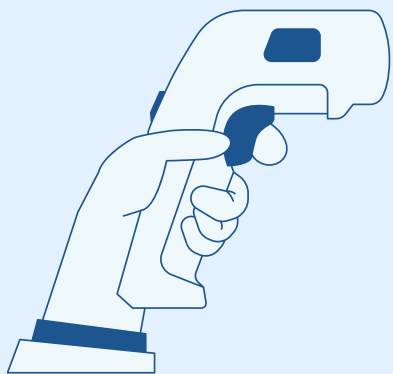
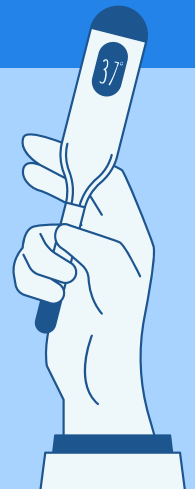
HCA REOPENING PROCEDURES & PLANS



Horse Creek Academy is dedicated to the health, safety, and well-being of our village. We will always stay true to our values of flexibility, service, and connection. Any updates or changes to this plan will be reflected here and shared with our families via social media and our robocall/email system.

AT HOME TEMPERATURE CHECKS

HCA asks parents to check the temperature of their child at home before coming to school. If your child has a fever, do not bring them to school.

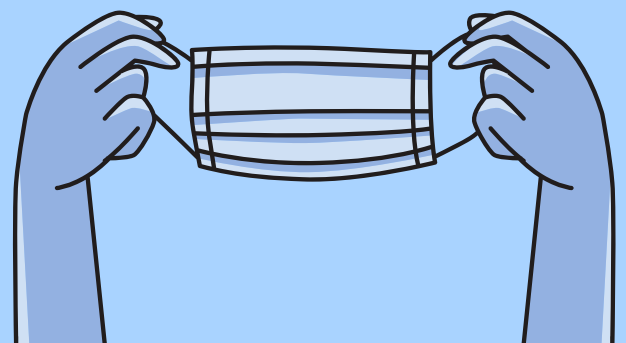


AT SCHOOL TEMPERATURE CHECKS

HCA will provide all teachers with infrared thermometers to check student temperatures quickly each morning. Students with elevated temperatures will be sent to Nurse Shealy for more accurate monitoring.

MASKS

Masks are encouraged but are not required at HCA.



NURSE

100.4 temps, or 100 temp with symptoms (Nurse's discretion), have a separate sick room in the nurse's area. Sick students are walked out by an HCA employee and parents sign out via clipboard system.

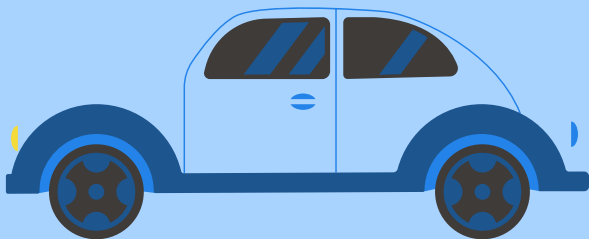
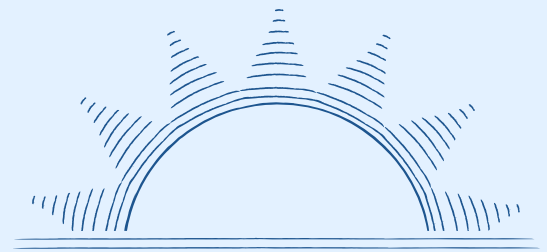


BLENDED LEARNING

We fully support our families who make the decision to keep their children at home. Families who want to pursue this option, and still attend HCA, must enroll in our Blended Learning program to virtually attend school.

EARLY CARE AND AFTER CARE

HCA will continue to offer both services. Early Care will be with Ms. Nichols, After Care will be with Quest Zone. Early Care runs from 7:00-7:30am (for 4k-8th) or from 7:00-8:00am (for 9th). After Care ends at 6pm.

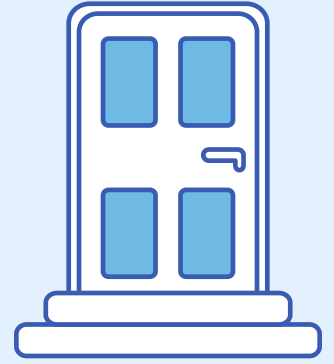


STUDENT ARRIVAL

4K-8th grade student arrival time is 7:30am (unless enrolled in Early Care). 9th grade arrival time is 8am (unless enrolled in Early Care).

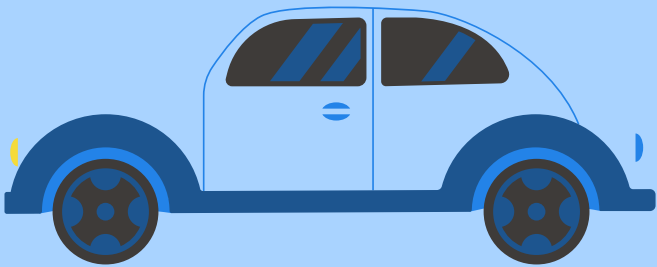
STUDENT ENTRANCE

4K-8th Students may not exit their vehicles to enter their school until 7:30 (4k-8th) or 8:00 (9th) unless enrolled in Early Care.



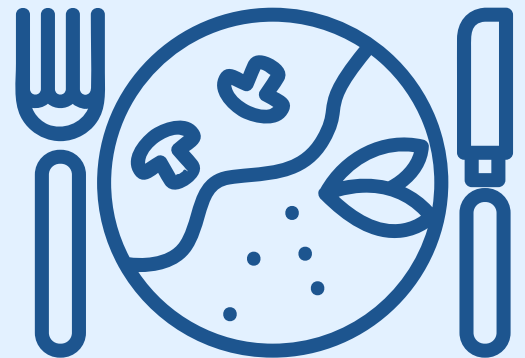
AFTERNOON CAR LINE

Students will be dismissed from classrooms to encourage social distancing. Specific Car Line details will be released later this summer.



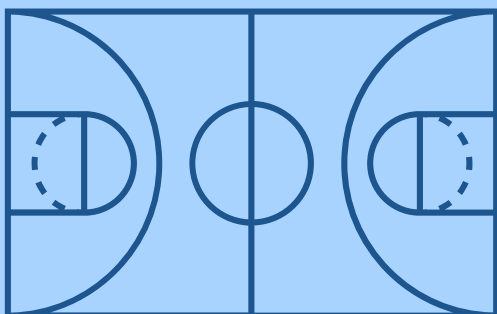
LUNCHES

Classes on rotation to eat in classroom, outside, or solo in the commons to increase social distancing



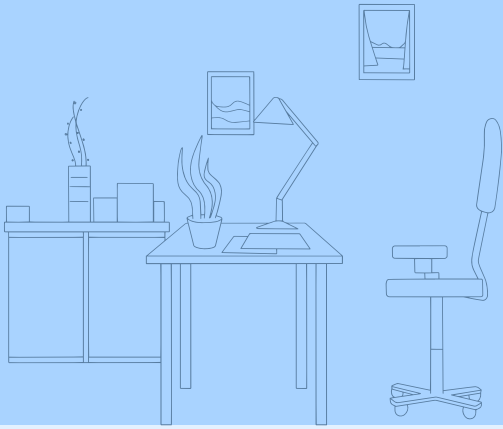
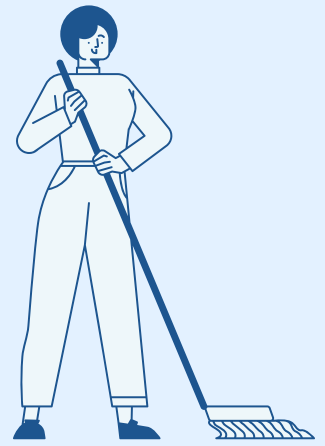
RECESS

Classes on rotation for playground, outside or in-class recess to increase social distancing.



CAMPUS CLEANING

Deep clean of the building 2-3 times a day. This includes, but is not limited to doorknobs, bathrooms, commons area, hallways. Teachers will be deep cleaning classrooms every morning, every night, throughout the school day including changes of classes, and if anyone gets sick.



OFFICE

The number of people in the office at one time will be limited and others will be asked to wait in the atrium.



**ADDITIONAL PROCEDURES AND PLANS
WILL BE ADDED AS NEEDED TO THIS
DOCUMENT. THANKS FOR
SUPPORTING THE HCA VILLAGE!**